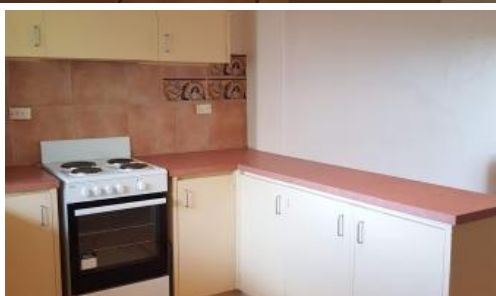


Leased

Unit 18, 23 Osborne Road, East Fremantle



2 WEEKS RENT FREE!

This apartment is located within a beautifully maintained complex. Open gardens and lawn areas surround the complex, plus fruit trees and a soon to be planted herb garden. A real sense of community can be felt within the grounds.

The Landlord is ideally looking for a long term Tenant and is willing to negotiate a free rent period or make minor improvements for the right Tenants. A 6 month lease might also be considered.

The apartment includes 2 bedrooms, with built in mirrored robe to master and ceiling fan. Plus bathroom, with a bath and separate toilet. Unlike many apartments, this property includes a laundry and indoor drying area. Open plan kitchen over looking the lounge/dining area. Electric cooking and sufficient cupboard space. Ceiling fans to living area, plus private balcony with lovely outlook.

Sorry - no lift to complex so please drive by and ensure this property suits your needed. 1 covered carport bay. Available now.

Easy access to bus routes to Fremantle and City and Canning Highway just moments away. Schools and shopping centres close by. Sorry No Pets.

 2  1  1

Price	\$295 p/w
Property Type	Rental
Property ID	665

Agent Details

Jaimee Lee - 0422 854 722

Office Details

Attadale
Unit 20a 550 Canning Hwy Attadale
WA 6156 Australia
08 9317 2221



The above information provided has been furnished to us by the vendor/s. We have not verified whether or not that information is accurate and do not have any belief in one way or the other in its accuracy. We do not accept any responsibility to any person for its accuracy and do no more than pass it on. All interested parties should make and rely upon their own inquiries in order to determine whether or not this information is in fact accurate.