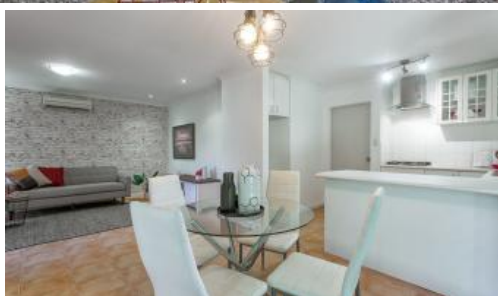


Sold



37 Mckimmie Rd, Palmyra



UNDER OFFER !

BE EARLY !

"Grand Opening" Saturday and Sunday !

Fantastic Buying ! Land Value !

Viewing Won't Disappoint !

A Superb Opportunity to purchase this delightful more like a small house, renovated' Front' air conditioned, light and bright 2 bedroom 1 bathroom (double brick and tile) home, in brilliant location near parklands !

Set amongst Beautiful Tranquil Surrounds and very private, this gorgeous property is nestled on a huge corner 429 sqm strata block (21 sqm frontage) with potential to extend or knock down later if you wish.

This neat abode presents really well and if you love the outdoors and location, this is for you !

Even though the home is only a 2 bedroom 1 Bathroom you do get an endless feeling of space and tranquility with room to extend.

Representing Fantastic value and investment this property will appeal to many prospect buyers !

🛏 2 🚿 1 🚗 2 📏 429 m2

Price SOLD for \$460,000

Property Type Residential

Property ID 668

Land Area 429 m2

Floor Area 133 m2

Agent Details

Jaimee Lee - 0422 854 722

Office Details

Attadale

Unit 20a 550 Canning Hwy Attadale

WA 6156 Australia

08 9317 2221



Featuring open plan living with a stunning outlook and superb entertaining grounds you won't be disappointed by viewing this gorgeous home.

Location wise you are very handy to cafes, shopping, transport, parks, schools, Fremantle, Riverforeshore, beaches, Melville Rec centre, etc.

Don't Delay on this terrific property as it will be Sold Quickly !

Will suit all buyers !

EXCELLENT Value and investment in such a BRILLIANT LOCATION !

Please CALL EXCLUSIVE AGENT MARK THORN ON 0412912557 FOR A VIEWING IF THE TIMES DON'T SUITE.

'Free Appraisal of Your Property ? PLEASE CALL MARK

The above information provided has been furnished to us by the vendor/s. We have not verified whether or not that information is accurate and do not have any belief in one way or the other in its accuracy. We do not accept any responsibility to any person for its accuracy and do no more than pass it on. All interested parties should make and rely upon their own inquiries in order to determine whether or not this information is in fact accurate.