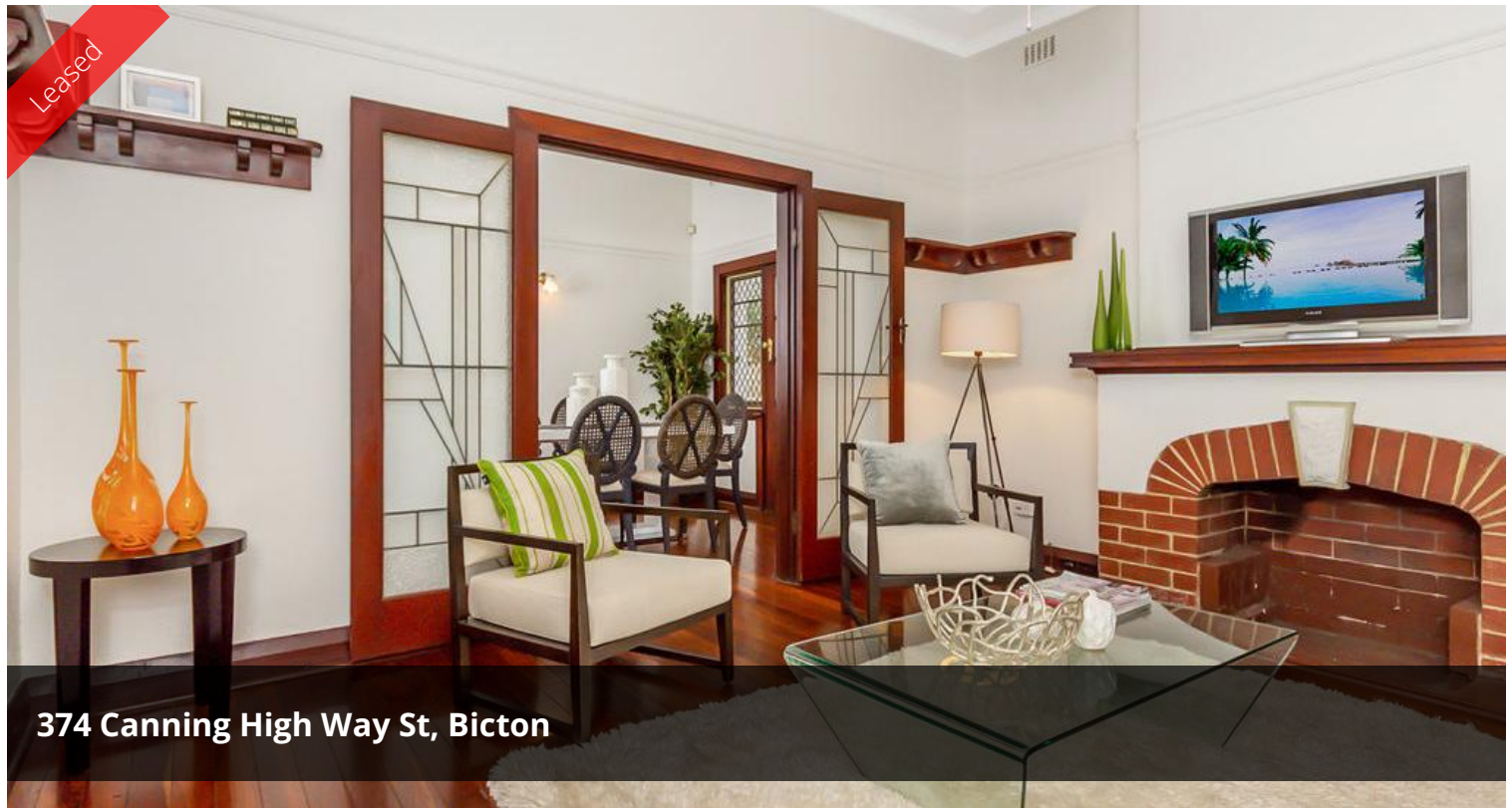


Leased



374 Canning High Way St, Bicton



Well Located & Ready Now!

Definitely one of a kind here, superbly renovated home with that true Character feeling.

A fantastic entry point into popular Bicton, handy to the river, Fremantle and all major amenities.

Gorgeous and beautifully presented 1939 brick and tile home, fully restored and renovated and in a very convenient location ! Close to shops and transport.

It's surprisingly very quiet when you are inside (behind a brick wall & set off the road).

You will enjoy the classic features: ornate high ceilings, lead lighting, wide skirting boards, stunning polished jarrah boards, 2 living areas, 3 double sized bedrooms, generous north facing outdoor area, r/c air con, dishwasher, ample storage throughout, single carport with extra parking bay.

3 1 2

Price 395 per week

Property Type Rental

Property ID 669

Agent Details

Jaimee Lee - 0422 854 722

Office Details

Attadale

Unit 20a 550 Canning Hwy Attadale
WA 6156 Australia

08 9317 2221



Close to Fremantle and the River.

Viewing will not disappoint ! Please ensure that you register your interest for any advertised home opens to avoid disappointment as home opens can be cancelled at the last minute.

Please drive past and call for a viewing! Available NOW

The above information provided has been furnished to us by the vendor/s. We have not verified whether or not that information is accurate and do not have any belief in one way or the other in its accuracy. We do not accept any responsibility to any person for its accuracy and do no more than pass it on. All interested parties should make and rely upon their own inquiries in order to determine whether or not this information is in fact accurate.